

SPEC SHEET + MEASUREMENTS

Product photo



OGIO[®] Kinetic Soft Shell. OG740

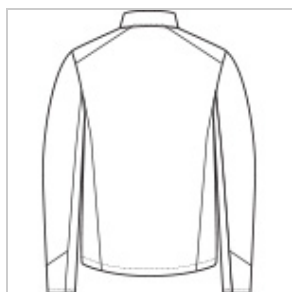
The dynamic design lines on these double weave, water-resistant soft shells give them a definite OGIO edge.

- 9.5-ounce, 94/6 polyester/spandex with durable water-repellent (DWR) finish
- OGIO heat transfer label for tag-free comfort
- Cadet collar
- O icon zipper pulls
- Front zippered pockets
- Half elastic cuffs
- Drop tail hem
- Toggle at hem
- Matte O icon at hem

Sketches



front



back

Care Instructions

Machine Wash Cold, With Like Colors. Do Not Bleach. Tumble Dry Low. Cool Iron, If Needed. Do Not Use Fabric Softener Or Dryer Sheets. Do Not Dry Clean.

Product Measurements

	XS	S	M	L	XL	2XL	3XL	4XL
Body Length at Back	27 1/4	28 1/4	29 1/4	30 1/4	31 1/4	32 1/4	32 3/4	33 1/4
Chest	18 1/2	20	21 1/2	23	24 1/2	26	28	30
Sleeve Length from Center Back	35 5/8	36 1/4	36 7/8	37 1/2	38 1/8	38 3/4	39 1/2	40 1/4

Body Length at Back: Measured from high point shoulder to finished hem at back.

Chest: Measured across the chest one inch below armhole when laid flat.

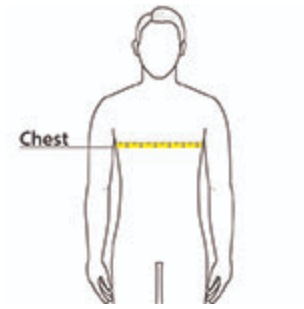
Sleeve Length from Center Back: Measure from Center Back neck to shoulder point to sleeve hem.

Size Chart

	XS	S	M	L	XL	2XL	3XL	4XL
Chest	32-34	35-37	38-40	41-43	44-46	47-49	50-53	54-57

How To Measure

Chest



Measure under the arm and around the fullest part of the chest with arms down, keeping tape horizontal.

Colors

Please note: PMS code information is shown only when an exact match is available.



Blacktop
PMS BLACK
C



River Blue
Navy
PMS 533C



Sahara
PMS 7529C