



Carhartt® Midweight Thermal-Lined Full-Zip Sweatshirt CT104078

This rain-blocking hoodie is work-ready.

- 10.5-ounce, 50/50 cotton/poly blend or 59/41 cotton/poly blend with Rain Defender durable water-repellent finish (Black, Carbon Heather, New Navy)*
- 100% polyester thermal lining retains warmth
- Attached thermal-lined three-piece hood with drawcord closure
- Full-length brass front zipper
- Two front hand warmer pockets with flaps for added security
- Stretchable, spandex-reinforced, rib knit cuffs and waistband
- Interior pocket with zipper closure
- Hidden media pocket
- Locker loop
- Carhartt label sewn on left hand warmer pocket
- Loose fit

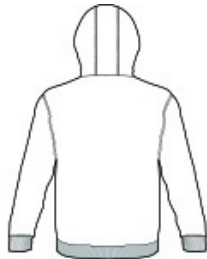
*Please note: Select colors in Carhartt fleece are currently transitioning from a 50/50 cotton/poly blend to a 59/41 cotton/poly blend. Weight and fabric properties remain the same. Your order may contain a combination of both fabrics.

CARE INSTRUCTIONS

Turn Garment Inside Out. Machine Wash Cold Gentle Cycle Like Colors. Do Not Bleach, Tumble Dry Low. Do Not Use Fabric Softeners. Cool Iron. Do Not Iron Ornamentation. Do Not Dry Clean. Exclusive Trimming.



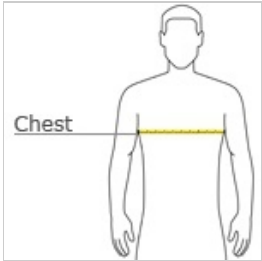
front



back



HOW TO MEASURE



CHEST WIDTH
Measure under the arm and around the fullest part of the chest with arms down, keeping tape horizontal.

SIZE CHART

	S	M	L	XL	2XL	3XL	4XL
Chest	34-36	38-40	42-44	46-48	50-52	54-56	58-60

PRODUCT MEASUREMENTS

	S	M	L	XL	2XL	3XL	4XL
Body Length at Back	27 3/4	28 3/4	28 3/4	29 3/4	29 3/4	30 3/4	30 3/4
Chest Width	23 1/2	25 1/2	27 1/2	29 1/2	31 1/2	33 1/2	35 1/2
Sleeve Length from Center Back	37 7/8	38 5/8	39 3/8	40 1/8	40 7/8	41 3/8	41 7/8

BODY LENGTH AT BACK
Measured from high point shoulder to finished hem at back.

CHEST WIDTH
Measured across the chest one inch below armhole when laid flat.

SLEEVE LENGTH FROM CENTER BACK
Measure from Center Back neck to shoulder point to sleeve hem.

COLOR INFORMATION



Black
PMS BLACK C



Carbon Heather
PMS 7540C



New Navy
PMS 533C