



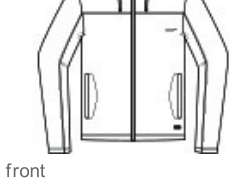
dry performance, this lightweight jacket has elevated style and easy movement.

- 4.2-ounce, 90/10 polyester/spandex
- Easy wash and wear
- Three-panel hood with dyed-to-match draw cords
- Zippered side-entry pockets
- TM logo woven patch label at left hem

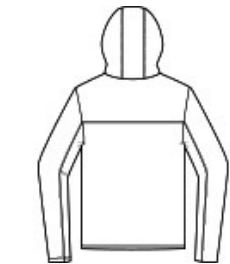
**

CARE INSTRUCTIONS

Machine Wash Cold With Like Colors. Gentle Cycle. Tumble Dry Low. Remove Promptly. Cool Iron If Needed.

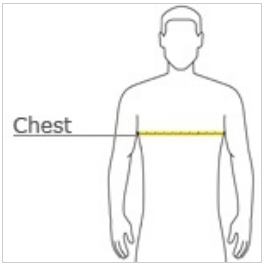


front



back

HOW TO MEASURE



CHEST WIDTH
Measure under the arm and around the fullest part of the chest with arms down, keeping tape horizontal.

SIZE CHART

	S	M	L	XL	2XL	3XL
Chest	35-37	38-40	42-44	45-47	48-50	52-54

PRODUCT MEASUREMENTS

	S	M	L	XL	2XL	3XL
Body Length at Back	27 3/4	29	29 3/4	30 3/4	31 3/4	32 3/4
Chest Width	20	21 1/2	23	24 1/2	26	27 1/2
Sleeve Length from Center Back	34	35	36	37	38	39

BODY LENGTH AT BACK
Measured from high point shoulder to finished hem at back.

CHEST WIDTH
Measured across the chest one inch below armhole when laid flat.

SLEEVE LENGTH FROM CENTER BACK
Measure from Center Back neck to shoulder point to sleeve hem.

COLOR INFORMATION



Black
PMS 426C



Blue Nights
Heather
PMS 432C



Dark Grey Heather
PMS 425C