



## TravisMathew Coveside Hoodie TM1MZ337



You've entered the ultimate comfort zone-and there's no going back. This incredibly soft, plush knit style is built for layering and it's just what you'd expect from TravisMathew.

- 6.5-ounce, 72/28 polyester/cotton
- Easy wash and wear
- 4-way stretch
- Wrinkle-resistant
- Three-panel hood with dyed-to-match drawcords
- Front pouch pocket
- TM logo woven label at left hem

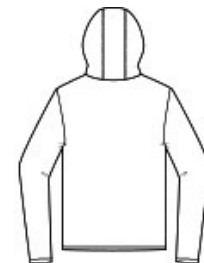
\*\*

### CARE INSTRUCTIONS

Machine Wash Cold With Like Colors. Gentle Cycle. Non-Chlorine Bleach. Tumble Dry Low. Remove Promptly. Cool Iron If Needed.

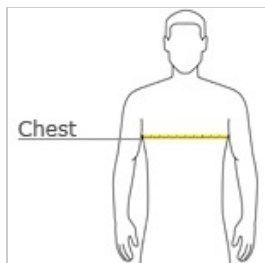


front



back

### HOW TO MEASURE



#### CHEST WIDTH

Measure under the arm and around the fullest part of the chest with arms down, keeping tape horizontal.

### SIZE CHART

|       | S     | M     | L     | XL    | 2XL   | 3XL   |
|-------|-------|-------|-------|-------|-------|-------|
| Chest | 35-37 | 38-40 | 42-44 | 45-47 | 48-50 | 52-54 |

### PRODUCT MEASUREMENTS

|                                | S      | M      | L      | XL | 2XL    | 3XL |
|--------------------------------|--------|--------|--------|----|--------|-----|
| Body Length at Back            | 28     | 29 1/4 | 30     | 31 | 32     | 33  |
| Chest Width                    | 19 1/2 | 21     | 22 1/2 | 24 | 25 1/2 | 27  |
| Sleeve Length from Center Back | 33 1/2 | 34 3/4 | 36     | 37 | 38     | 39  |

#### BODY LENGTH AT BACK

Measured from high point shoulder to finished hem at back.

#### CHEST WIDTH

Measured across the chest one inch below armhole when laid flat.

#### SLEEVE LENGTH FROM CENTER BACK

Measure from Center Back neck to shoulder point to sleeve hem.

### COLOR INFORMATION



Black  
PMS 426C



Blue Nights  
PMS 432C



Dark Grey Heather  
PMS 425C