

SPEC SHEET + MEASUREMENTS

Product photo



OGIO® Modern Performance Full-Zip. OE703

LAYERABLE WARMTH

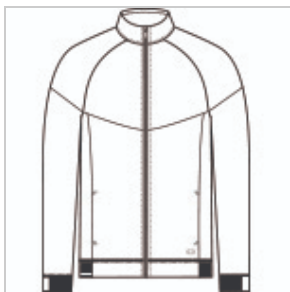
STRETCH

STAY-COOL WICKING

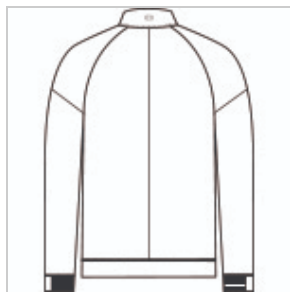
REFLECTIVE DETAILS

- 7.4-ounce, 85/15 poly/spandex with stay-cool wicking technology
- Reflective OGIO heat transfer label for tag-free comfort
- Zip-through cadet collar
- Black reflective O heat transfer on center back collar
- Front and shoulder piecing details
- Metaluxe® zipper
- Engraved matte black metal O zipper pull
- Black reflective O heat transfer on left pocket

Sketches



front



back

CARE INSTRUCTIONS

Machine wash cold with like colors. Do not use fabric softener. Only non-chlorine bleach, when

needed. Tumble dry low. Remove promptly. Cool iron, if necessary. Do not dry clean.

Product Measurements

	XS	S	M	L	XL	2XL	3XL	4XL
Body Length at Back	26 1/2	27 1/2	28 1/2	29 1/2	30 1/2	31 1/2	32	32 1/2
Chest	19 1/2	21	22 1/2	24	25 1/2	27 1/2	29	32
Sleeve Length from Center Back	33 1/4	34	34 3/4	35 1/2	36 1/4	37 1/2	37 3/4	38 1/2

Body Length at Back: Measured from high point shoulder to finished hem at back.

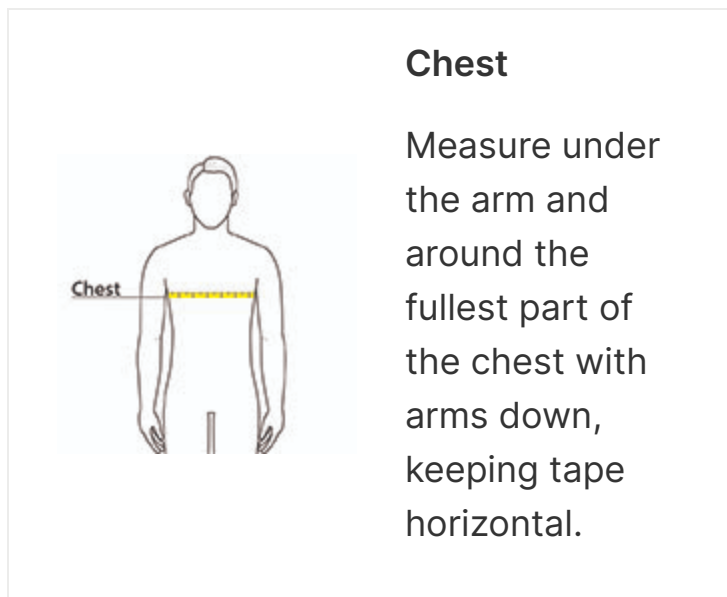
Chest: Measured across the chest one inch below armhole when laid flat.

Sleeve Length from Center Back: Measure from Center Back neck to shoulder point to sleeve hem.

Size Chart

	XS	S	M	L	XL	2XL	3XL	4XL
Chest	32-34	35-37	38-40	41-43	44-46	47-49	50-53	54-57

How To Measure



Colors

Please note: PMS code information is shown only when an exact match is available.



Blacktop
PMS BLACK
C



Deep Olive



Navy
PMS 5255C



Tarmac Grey