

SPEC SHEET + MEASUREMENTS

Product photo

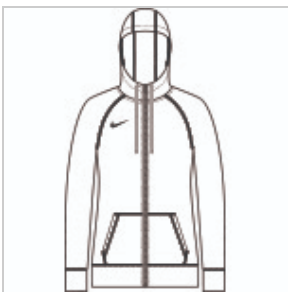


Nike Women's Gym Vintage Full-Zip Hoodie. CN9402

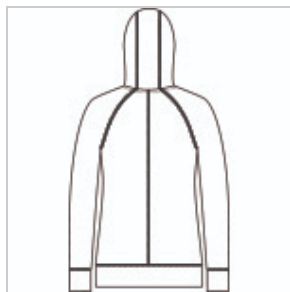
This hoodie has an old-school gym look with new-school style.

- 4.7-ounce, 60/40 organically, sustainably-grown cotton/recycled polyester
- Oversized, three-panel hood with drawcords
- Front pouch pockets
- Open cuffs
- Contrast heat transfer Swoosh logo on right chest

Sketches



front



back

CARE INSTRUCTIONS

Machine Wash Cold (30c). Wash Inside Out.
Wash with Like Colors. Do Not Use Softeners. Do
Not Use Bleach. Tumble Dry Low. Do Not Iron. Do
Not Dry Clean.

Product Measurements

	S	M	L	XL	2XL
Size	4/6	8/10	12/14	16/18	20/22
Body Length at Back	22	22 1/4	23 1/4	24	24 3/4
Bust	20 7/8	22 1/4	23 5/8	25 1/2	27 1/2
Sleeve Length from Center Back	32 7/8	33 3/8	33 7/8	34 1/2	35 1/8

Body Length at Back: Measured from high point shoulder to finished hem at back.

Bust: Measured across the chest one inch below armhole when laid flat.

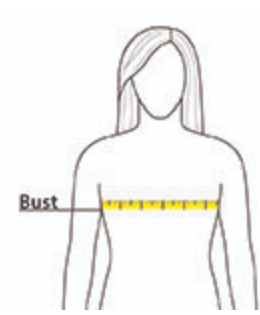
Sleeve Length from Center Back: Measure from Center Back neck to shoulder point to sleeve hem.

Size Chart

	S	M	L	XL	2XL
Size	4/6	8/10	12/14	16/18	20/22
Bust	32 1/2-35 1/2	35 1/2 - 38	38-41	41-44 1/2	44 1/2 - 48 1/2

How To Measure

Bust



Measure under the arm and around the fullest part of the bust with arms down, keeping tape horizontal.

Colors

Please note: PMS code information is shown only when an exact match is available.



Team
Anthracite
PMS 7540C



Team Black
PMS BLACK
C



Team Navy
PMS 533C



Team Royal
PMS 7687C