

SPEC SHEET + MEASUREMENTS

Product photo



OGIO[®] Connection Full-Zip. OG706

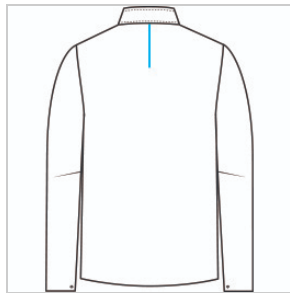
Sleek, modern and built for movement, this weather-resistant OGIO look easily takes you from home to the office to everywhere in-between.

- 92/8 poly/spandex with durable water-repellent (DWR) finish
- OGIO heat transfer label for tag-free comfort
- Waterproof center front zipper
- Articulated elbows
- Front pockets with hidden zippers for valuables or phone
- Black reflective taping down center back
- Black reflective O heat transfer on front left hem

Sketches



front



back

CARE INSTRUCTIONS

Machine Wash Cold. Do Not Use Fabric Softener. Non-Chlorine Bleach When Needed. Tumble Dry Low. Cool Iron If Necessary. Do Not Dry Clean.

Product Measurements

	XS	S	M	L	XL	2XL	3XL	4XL
Body Length at Back	26 1/2	27 1/2	28 1/2	29 1/2	30 1/2	31 1/2	32	32 1/2
Chest	19	20 1/2	22	23 1/2	25	26 1/2	28 1/2	30 1/2
Sleeve Length from Center Back	34 3/4	35 1/2	36 1/4	37	37 3/4	38 1/2	39 1/4	40

Body Length at Back: Measured from high point shoulder to finished hem at back.

Chest: Measured across the chest one inch below armhole when laid flat.

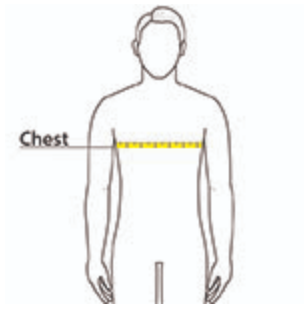
Sleeve Length from Center Back: Measure from Center Back neck to shoulder point to sleeve hem.

Size Chart

	XS	S	M	L	XL	2XL	3XL	4XL
Chest	32-34	35-37	38-40	41-43	44-46	47-49	50-53	54-57

How To Measure

Chest



Measure under the arm and around the fullest part of the chest with arms down, keeping tape horizontal.

Colors

Please note: PMS code information is shown only when an exact match is available.



Blacktop
PMS Black C



Tarmac Grey
PMS 7540C