



# Carhartt® Full Swing® Cryder Jacket CT102207

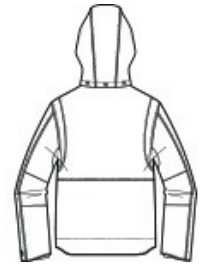


When you're bucking hay or swinging a framing hammer, you need a jacket that gives you freedom to move.

- 8.25 ounce, 59/39/2 cotton/polyester/spandex Quick Duck® canvas
- 80 gram 3M™ Thinsulate, insulation for warmth
- Rain Defender® durable water repellent
- 30% lighter but ounce-for-ounce as durable as sandstone
- Rugged Flex® durable stretch technology for ease of movement
- Mighty Back® Bi-Swing between shoulders for instant recovery
- Flex Elbow, for less restriction
- Freedom Gussets under arms
- Mock neck collar with zip-through and detachable hood
- Two-way center front zipper with inner storm flap
- Two zippered chest pockets
- Lower hand pockets with hidden snap closures
- Carhartt-strong, triple-stitched main seams
- Carhartt label sewn on chest pocket
- Loose fit



front

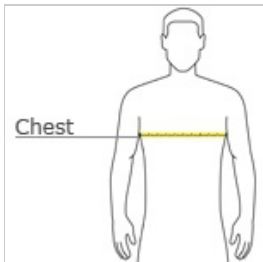


back

## CARE INSTRUCTIONS

Wash and dry inside out with like colors, Machine wash cold,  
Do not bleach, Tumble dry low, Do not use fabric softeners,  
Do not iron, Do not dry clean,

## HOW TO MEASURE



### CHEST WIDTH

Measure under the arm and around the fullest part of the chest with arms down, keeping tape horizontal.

## SIZE CHART

	S	M	L	XL	2XL	3XL
Chest	34-36	38-40	42-44	46-48	50-52	54-56

## PRODUCT MEASUREMENTS

	S	M	L	XL	2XL	3XL
Body Length at Back	28 1/2	29 1/2	29 1/2	30 1/2	30 1/2	31 1/2
Chest Width	23	25	27	29	31	33
Sleeve Length from Center Back	35 2/3	36 3/4	37 3/8	38	38 5/8	39 1/8

### BODY LENGTH AT BACK

Measured from high point shoulder to finished hem at back.

### SLEEVE LENGTH FROM CENTER BACK

Measure from Center Back neck to shoulder point to sleeve hem.

### CHEST WIDTH

Measured across the chest one inch below armhole when laid flat.

## COLOR INFORMATION



Black  
PMS BLACK C



Shadow Grey  
PMS 7540C