

SPEC SHEET + MEASUREMENTS

Product photo



Nike Dri-FIT Classic Polo. 267020

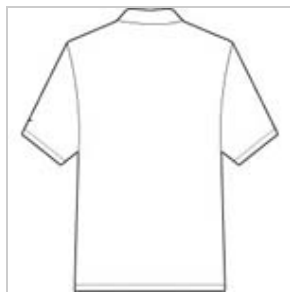
Nike is known for classic polos engineered for maximum comfort. The Dri-FIT fabric technology delivers superior moisture management, while the stitch-trimmed shoulder panels and gussets make a distinctive difference.

- 4.7-ounce, 100% polyester Dri-FIT fabric
- Flat knit collar
- Three-button placket
- Pearlized buttons are selected to complement the shirt color
- Open hem sleeves
- Contrast embroidered Swoosh logo on left sleeve

Sketches



front



back

CARE INSTRUCTIONS

Machine wash cold, inside out, with like colors. Do not use softeners. Do not bleach. Tumble dry low. Do not iron. Do not dry clean.

Product Measurements

	XS	S	M	L	XL	2XL	3XL	4XL
Chest	19	20 1/2	22	23 1/2	25	26 1/2	28	29 1/2
Sleeve Length	19 1/4	20	20 3/4	21 1/2	22	22 1/2	23	23 1/2
Body Length at Back	27 1/2	28 1/2	29 1/2	30 1/2	32	33 1/2	35	36 1/2

Chest: Measured across the chest one inch below armhole when laid flat.

Sleeve Length: Start at center of neck and measure down shoulder, down sleeve to hem.

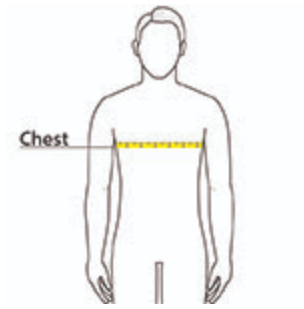
Body Length at Back: Measured from high point shoulder to finished hem at back.

Size Chart

	XS	S	M	L	XL	2XL	3XL	4XL
Chest	32-35	35 - 37 1/2	37 1/2 - 41	41 - 44	44 - 48 1/2	48 1/2 - 53 1/2	53 1/2 - 58	58 - 63

How To Measure

Chest



Measure under the arm and around the fullest part of the chest with arms down, keeping tape horizontal.

Colors

Please note: PMS code information is shown only when an exact match is available.



Black
PMS
PROCESS
BLACK C



Court Blue
PMS 295C



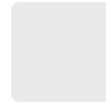
Light Blue
PMS 645C



Midnight
Navy
PMS 2767C



Varsity Red
PMS 704C



White