

## SPEC SHEET + MEASUREMENTS

### Product photo

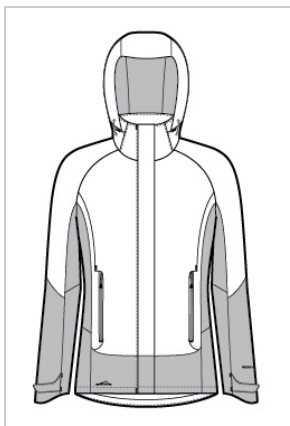


# Eddie Bauer® Women's WeatherEdge® Jacket. EB559

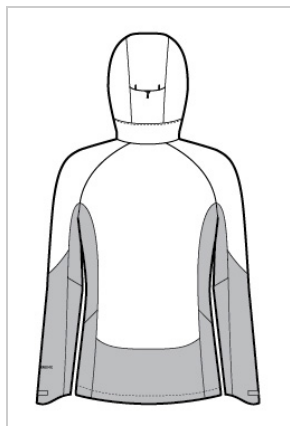
Two element-fighting WeatherEdge 5K/5K fabrics come together in this jacket for highly waterproof, breathable performance.

- 94/6 poly/spandex and 92/8 poly/spandex
- Fully seam-sealed
- StormRepel® durable water-repellent (DWR) coating for additional weather protection
- Four-way stretch for easy mobility
- Adjustable hood with locking drawcord
- Waterproof molded front zippered pockets
- Adjustable tab cuffs with hook and loop closures
- Decoration access pocket
- Adjustable locking drawcord hem
- Contrast heat transfer WeatherEdge logo on left sleeve
- Contrast heat transfer Eddie Bauer logo on right hem

### Sketches



front



back

### CARE INSTRUCTIONS

Machine wash cold with like colors, only non-chlorine bleach when needed, tumble dry low, warm iron if necessary.

## Product Measurements

	XS	S	M	L	XL	2XL	3XL	4XL
Size	2	4/6	8/10	12/14	16/18	20/22	24/26	28/30
Bust	28 1/4	28 7/8	29 1/2	30 1/8	30 3/4	31 3/8	32	32 5/8
Body Length at Front	19 1/2	20 1/2	21 1/2	23	24 1/2	26	28	30
Sleeve Length	32 1/2	33	33 1/2	34 1/8	34 3/4	35 3/8	35 3/4	36 1/8

**Bust:** Measured across the chest one inch below armhole when laid flat.

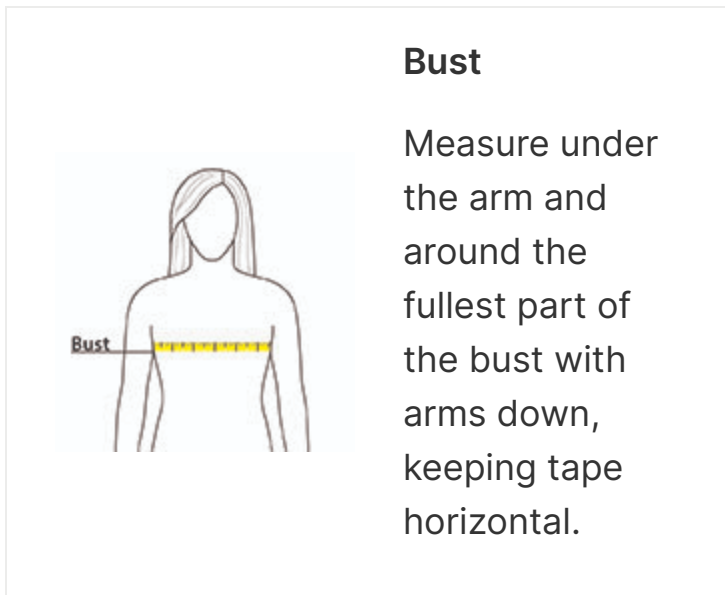
**Body Length at Front:** Measure from high point shoulder to lowest point of hem at front.

**Sleeve Length:** Start at center of neck and measure down shoulder, down sleeve to hem.

## Size Chart

	XS	S	M	L	XL	2XL	3XL	4XL
Size	2	4/6	8/10	12/14	16/18	20/22	24/26	28/30
Bust	32-33	34-35	36-37	38-40	41-43	44-46	47-49	50-52

# How To Measure



## Colors

**Please note: PMS code information is shown only when an exact match is available.**



Black  
PMS BLACK  
C



Cobalt Blue/  
River Blue  
Navy  
PMS 654C



Metal Grey/  
Grey Steel  
PMS COOL  
GREY 10C