

SPEC SHEET + MEASUREMENTS

Product photo



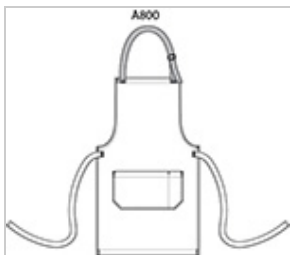
PORT AUTHORITY.

Port Authority[®] Market Full-Length Bib Apron. A800

Craftsman styling creates a signature look in this apron that's perfect for bistros, pubs, cooking classes and more. The wrinkle-resistant fabric has a denim-like look which blends performance with style to make a sophisticated statement.

- 7-ounce, 60/40 cotton/poly yarn-dyed twill
- Adjustable contrast webbing neck strap with antique-finish metal slider
- Patch pocket, pen pocket
- Self-fabric waist ties
- Contrast stitch details
- Measures: 25"w x 34.5"l

Sketches



front

CARE INSTRUCTIONS

Machine Wash Cold, Only Non Chlorine Bleach when needed, Tumble Dry Low, Do Not Dry Clean.

Product Measurements

	OSFA
Length	34 1/2
Apron Waist Width	25

Length: Measured from center front neck to hem.

Apron Waist Width: Measure under the waist straps straight across, edge to edge.

Colors

Please note: PMS code information is shown only when an exact match is available.



Ash Grey
PMS 425C



Dark
Midnight
PMS 426C