



Carhartt® Duck Vest. CTV01



A great extra layer, Carhartt's Duck Vest is made of cotton duck and insulated for warmth.

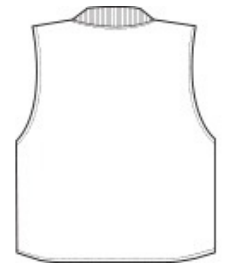
- 12-ounce, firm hand, 100% ring spun cotton duck canvas
- Water-repellent and wind-resistant
- Nylon lining quilted to arctic-weight polyester insulation
- Rib knit collar
- Brass center-front zipper with interior storm flap
- Interior pocket with hook and loop closure
- Two large insulated lower-front pockets
- Locker loop
- Drop tail hem
- Carhartt-strong, triple-stitched main seams
- Carhartt label sewn on left pocket
- Relaxed fit

CARE INSTRUCTIONS

Color Black: Machine wash cold with like colors, Do not bleach, Tumble dry low remove promptly, Steam iron shell only. All colors except Black: Machine wash warm with like colors, Do not bleach, Tumble dry medium remove promptly, Steam iron shell only.

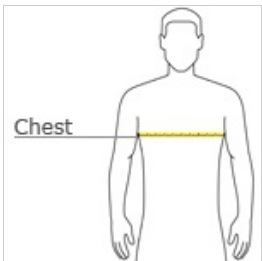


front



back

HOW TO MEASURE



CHEST WIDTH

Measure under the arm and around the fullest part of the chest with arms down, keeping tape horizontal.

SIZE CHART

| | S | M | L | XL | 2XL | 3XL | 4XL | 5XL |
|-------|-------|-------|-------|-------|-------|-------|-------|-------|
| Chest | 34-36 | 38-40 | 42-44 | 46-48 | 50-52 | 54-56 | 58-60 | 62-64 |

PRODUCT MEASUREMENTS

| | S | M | L | XL | 2XL | 3XL | 4XL | 5XL |
|---------------------|--------|--------|--------|--------|--------|--------|--------|--------|
| Body Length at Back | 27 | 28 | 28 | 29 | 29 | 30 | 30 | 31 |
| Chest Width | 20 1/2 | 21 1/2 | 24 1/2 | 26 1/2 | 28 1/2 | 30 1/2 | 32 1/2 | 34 1/2 |

BODY LENGTH AT BACK

Measured from high point shoulder to finished hem at back.

CHEST WIDTH

Measured across the chest one inch below armhole when laid flat.

COLOR INFORMATION



Black
PMS BLACK C



Carhartt Brown
PMS 463C